

Installation and Maintenance Manual

Commercial Drive Bolt

Model: GDS DB Slim 50,130,200

Made in Australia from Australian & quality imported components



8 Bennet Avenue Melrose Park SA 5039
Phone 08 8374 3466

A.B.N 62 059 806 405

Nov V1.01 2015

CONTENTS

Section No:		Page No:
1	Product description and operation	3
2	Installation details	4
3	Mechanical installation Dimension drawings of drive bolt Specifications	4-5
4	Connection diagram and terminal legend Schematic circuit diagram	6 7
5	Description of control logic	8
6	Programming CB-6 for motor Start delay	9
7	Manual release and Maintenance	9
8	Warranty	10

1. Product description:

The drive bolt controls are specifically designed to be used in conjunction with the ATA CB-6 control board, and some others in the ATA range.

It can be adapted to be connected to other control boards as long as they have the following.

- A lock output with N/O dry contacts.
- An adjustable lock pre activation time before the motors start.
- Be able to hold the lock output on for the complete gate travel time.
- Have N/C limit inputs
- Be able to adjust the delay between gate leafs on dual swing gates

Operation of drive bolt with gate starting from closed position.

Upon a command to open the gate, the lock relay activate, driving the bolt up. After the pre programmed time delay, motor 1 will start and in turn, motor 2 will start up in the case of a dual gate set up. Upon reaching the full open position, **if the operators (n.c) close limit switch/s have been wired through the drive bolt controls** it will remain up and will always stay up while the closed limit switch is in its N/C state. Once the gate has returned to its full closed position the bolt will drive down. If the PE cells are activated while closing, depending on the setting on the CB-6 board, the gate will stop, delay for the pre programmed time equal to delay at start up, then return to the full open position then wait for its next command. The drive bolt will again stay up.

2. Installation details

1. The drive bolt is controlled by relays and functions of the CB-6 control board.
2. It requires a minimum .75mm 2 core cable to be run between the din rail terminals marked brown and blue, corresponding to the brown and blue wires on the drive bolt assembly. If the cable run is over 15m use 1.5mm cable.
3. In the case of a single swing gate set up, instead of connecting the M1 close limit switch wires to the CB-6 terminals, they need to be connected to the terminals 3 and 4 at the drive bolt controls. In doing this, if the limits are wired up with the common being already connected between the open and closed switches, this common connection between the two will have to be separated turning the standard 3 wire limit wiring into a 4 wire connection so now both the open and closed limits will have their own separate commons.
4. In the case of a dual swing gate set up, M1 limit switch connections are same as above. But the M2 limit switch connections are made at the CB-6 control board marked (M2 com, op, cl). And will be standard 3 wire limits.
5. The drive bolt is protected by a 2A fuse located with the drive bolt controls.
6. The CB-6 board has to be set to SPECIAL ADJUSTMENTS mode and a delay time needs to be set so there will be a delay time from when the lock relay is energized to when the motors are powered. This time delay will have been set at the factory if the CB-6 gate controls were supplied at the same time the drive bolt controls were supplied at a time of 4 seconds, but if that time is not suitable for your application this setting can be changed, details are provided further on.

3. Mechanical installation

-This drive bolt has been designed to extend into its locating hole only when the gate has come to its fully closed position.

-The total travel of the bolt is 50,130 or 200mm in both directions and is not adjustable.

-It can be mounted vertically or horizontally depending on application. A suitable locating hole or catcher bracket has to be made and fitted to suit as every installation site is different.

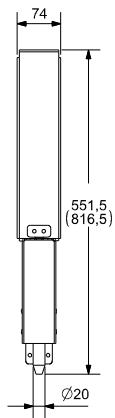
- A gate stop also has to be fitted to the ground for a dual swing gate set up, or on the receiving post if in the case of a single swing gate, so that the gate leaf can stop in the correct position before the bolt extends.

a) Prepare a suitable mounting position on the gate frame, and fix suitable gate stop in position.

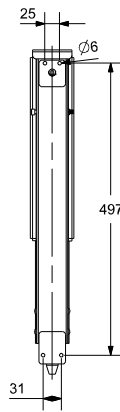
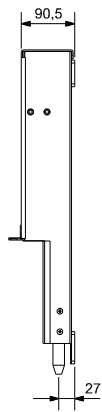
b) Determine the mounting height of the operator by ensuring that, with the bolt fully retracted, there is suitable clearance between the end of the bolt and the ground throughout the complete travel of the gate. Also keeping in mind, if the assembly has to be mounted higher, you still have enough of the bolt located into the hole when the bolt is extended.

c) Run the power cable between the controls and the drive bolt operator and connect the brown and blue wires correspond to the terminals marked brown (+) and blue (-) at the drive bolt controls.

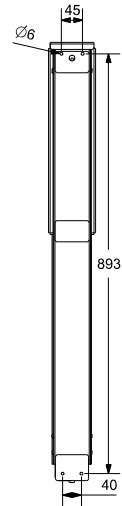
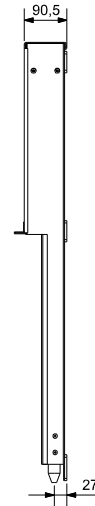
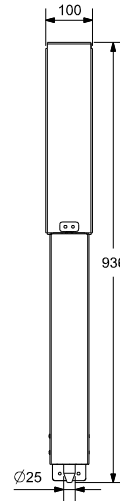
DB Slim 50



DB Slim 130

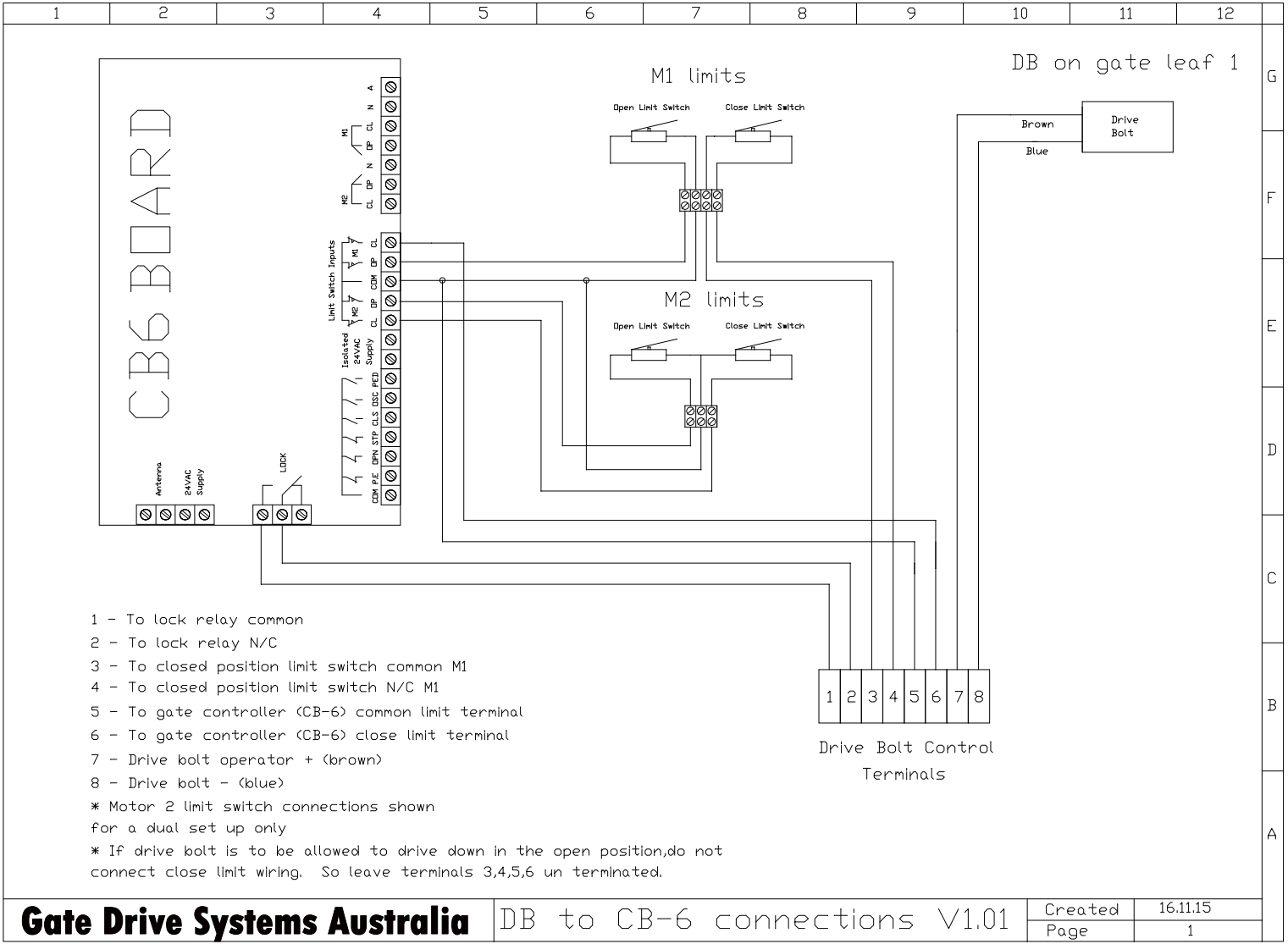


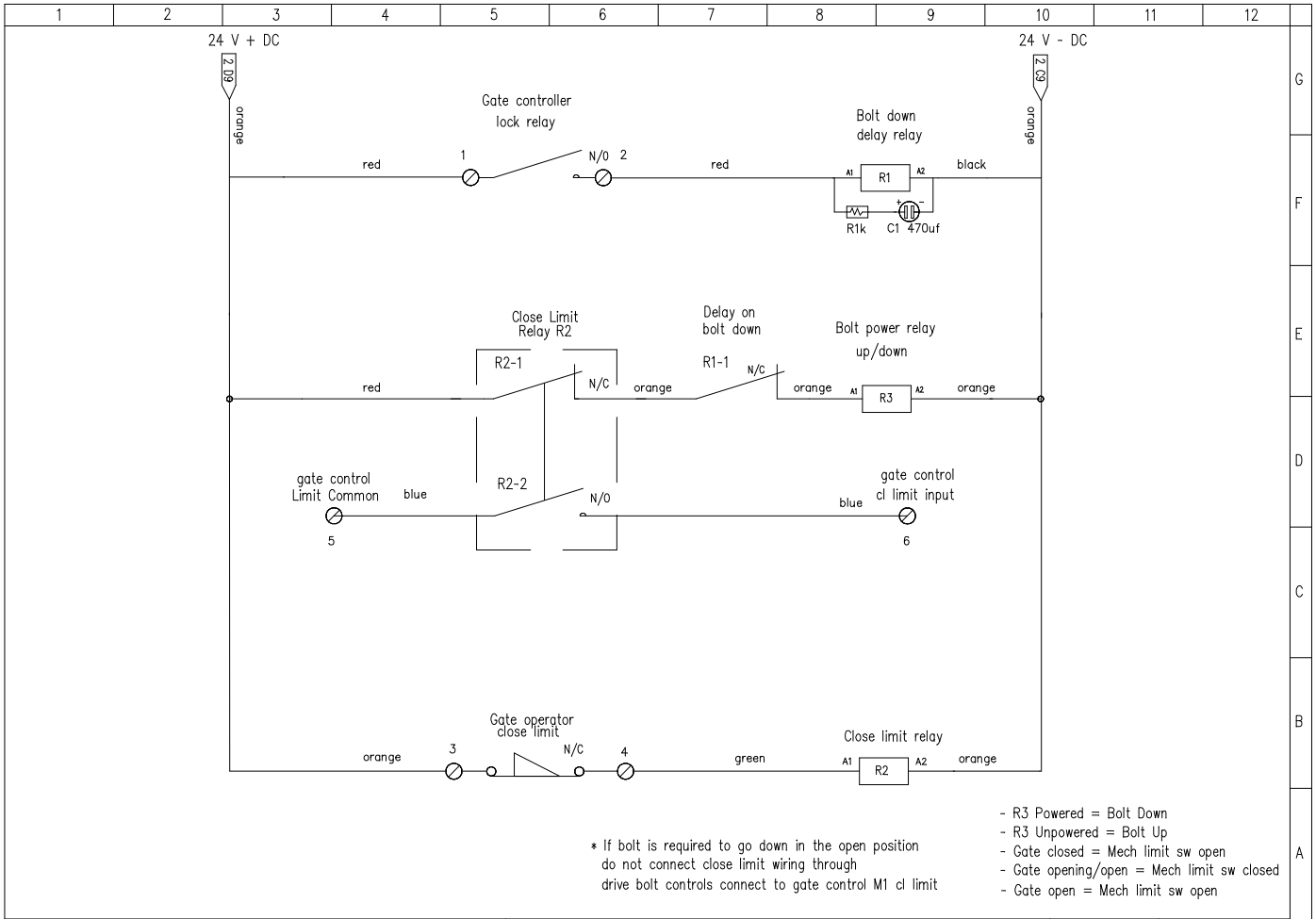
DB Slim 200



Specifications of drive bolt operator

Power Supply	24vdc 2.0 A
Push/Pull force	500N Max
Bolt Size	DB 50,130 (20mm bolt) DB 200 (25mm bolt)
Bolt Travel	DB 50 (50mm travel) DB 130 (130mm travel) DB 200 (200mm travel)

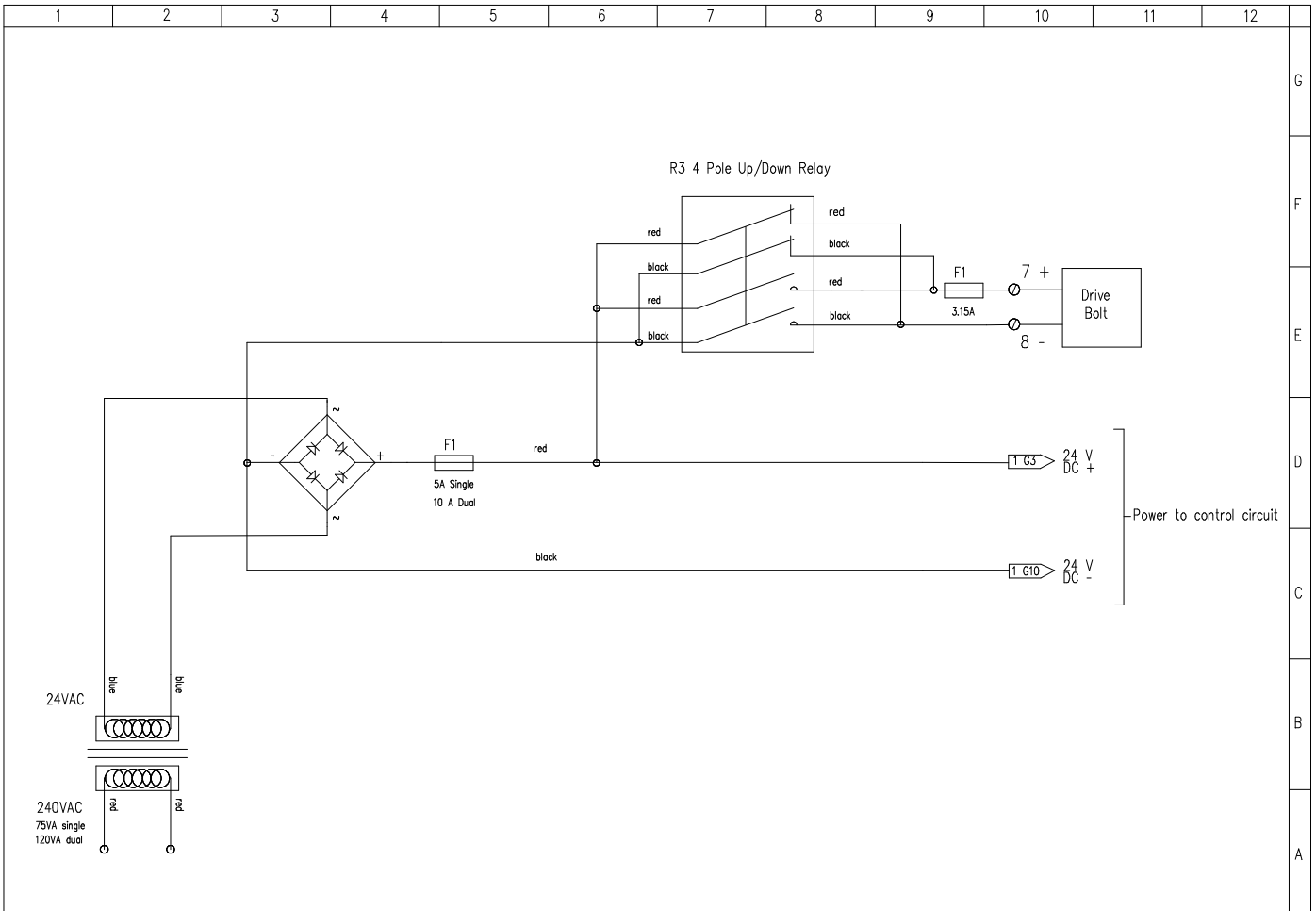




Gate Drive Systems Australia

GDS DB ENT control cct V1.02

Created	27/05/2014
Page	1 of 2



Gate Drive Systems Australia

GDS DB ENT power cct V1.03

Created	12/03/2015
Page	2 of 2

5. Description of control logic

From closed to open position

- Open signal received by CB-6 board.
- CB-6 lock relay contact closes.
- R1 energises opening R1-1 contact.
- R3 energises switching reverse voltage to drive to drive the bolt up.
- After a programmed delay time the CB-6 board drives the gate motors.
- As the gates open the close limit switch changes from open to close.
- R2 energises opening R2-1 contact and closing R2-2 contact.
- Once the gate is fully open, the CB-6 lock relay de energises R1, but because R2-1 contact is open, R3 remains de energised and the bolt stays up as long as R2-1 contact is held open via the close limit switch.

From open to closed position

- CB-6 board, receives a signal to close, or has timed out through its auto close setting.
- CB-6 lock relay contact closes.
- R1 energises opening R1-1 contact.
- After a programmed delay time the CB-6 board drives the gate motors.
- As the gates reach the closed position, the close limit switch opens.
- R2 de energises closing R2-1 and opening R2-2.
- The CB-6 lock relay contact opens turning power off to R1.
- Capacitor C1 discharges through R1 causing a delay time before R1 de energises closing the R1-1 contact.
- R3 energises, switching forward voltage to drive the bolt down.

6. Programming CB-6 for motor start delay

A 3 second delay has been programmed at the factory, if a different time is required, follow these instructions to changed, or alternatively, the ATA PG-3 universal hand held programmer can used.

SPECIAL ADJUSTMENTS.

This section gives instructions on how to make some of the less common adjustments. To do this the controller must be placed in the special adjustment mode. This is done by following the steps below.

- a) Turn the control board's power off
- b) Place the slide switch [26] into the "set" position
- c) Press and hold the CLS button [31]
- d) Turn the control board's power on. (Keep holding the CLS button)
- e) Wait until both the status L.E.Ds [25] turn off and then release the CLS button [31].
- f) Both the status L.E.Ds [25] will come on to indicate that the special adjustment mode is selected.

The controller is now ready to adjust the special parameters. **Follow detail below.**

Make sure the slide switch [26] is placed into the "RUN" position after adjustments made.

To aid adjustment the status L.E.Ds [25] will both be turned off when timer adjustment starts and the CLS status led [25] will flash at one second intervals while the button is pressed.

SETTING TIME FROM WHEN LOCK RELEASE OUTPUT IS ACTIVATED TO WHEN MOTORS ARE STARTED.

The controller can be made to activate the lock release output before the motors are started. To set the duration of the pause - Press and hold the OSC button [28] for the required pre-drive lock activation time.

7. Manual release of drive bolt

Remove the cover to get to the manual release cable, and pull the cable up to withdraw the bolt up, out of its locating hole, so then the gate can then be allowed to be pushed open manually.

Maintenance

1. Check that locating hole is clear and clean out as necessary.
2. Make sure gate limits are set correctly and gate stop isn't loose and make adjustments as necessary.
3. Make sure drive bolt is greased regularly, a grease nipple is provided.

8. WARRANTY

- a. Gate Drive Systems Australia warrants that the goods manufactured by it shall be free from defect in manufacture for a period of 12 months from the date of invoice. Should any fault occur within that period as a result of faulty workmanship or materials, Gate Drive Systems Australia will at its discretion, replace the product at no charge to the Customer except for installation & freight. The appropriate Serial Number must be quoted for all warranty claims.
- b. For the goods not manufactured by Gate Drive Systems Australia, we shall pass on the manufacturer's warranty to the Customer from the date of invoice. It is the manufacturer's discretion to repair or replace goods deemed to be defective as a result of faulty workmanship or materials.
- c. All goods must be returned to Gate Drive Systems Australia or its representative for inspection or testing to assess if a claim is justified. It is the responsibility and at the cost of the Customer, to remove & return the goods for inspection and freight costs are the responsibility of the Customer.
- d. The warranty is negated and will not apply in the following circumstances:-
 - i. If no proof of date of purchase can be produced.
 - ii. If the product has been used in a manner beyond its design parameters.
 - iii. If the product is tampered with or repaired by personnel not authorised to do so.
 - iv. In respect of loss or damage caused by rough treatment.
 - v. If the product is not used and maintained in accordance with instructions or recommendations listed in this Installation and Maintenance Manual.
 - vi. In respect of loss or damage caused by an Act of God or any other cause not within the manufacturers control.
- e. Goods returned under warranty for repair or testing will incur a charge to be fixed by the manufacturer if no fault is found.
- f. The Customer shall bear freight charges for removing & returning the goods for inspection and for the delivery & installation of any replacement or repaired product from a justified warranty claim.
- g. Save for the express conditions and warranties herein contained all other conditions or warranties (whether as the quality, fitness for purpose or any other matter) expressed or implied by statute, common law, equity, trade custom, usage or otherwise are hereby expressly excluded provided that nothing in these terms and conditions shall exclude or limit any breach or condition implied by law, the exclusion or limitation of which is not permitted by law.